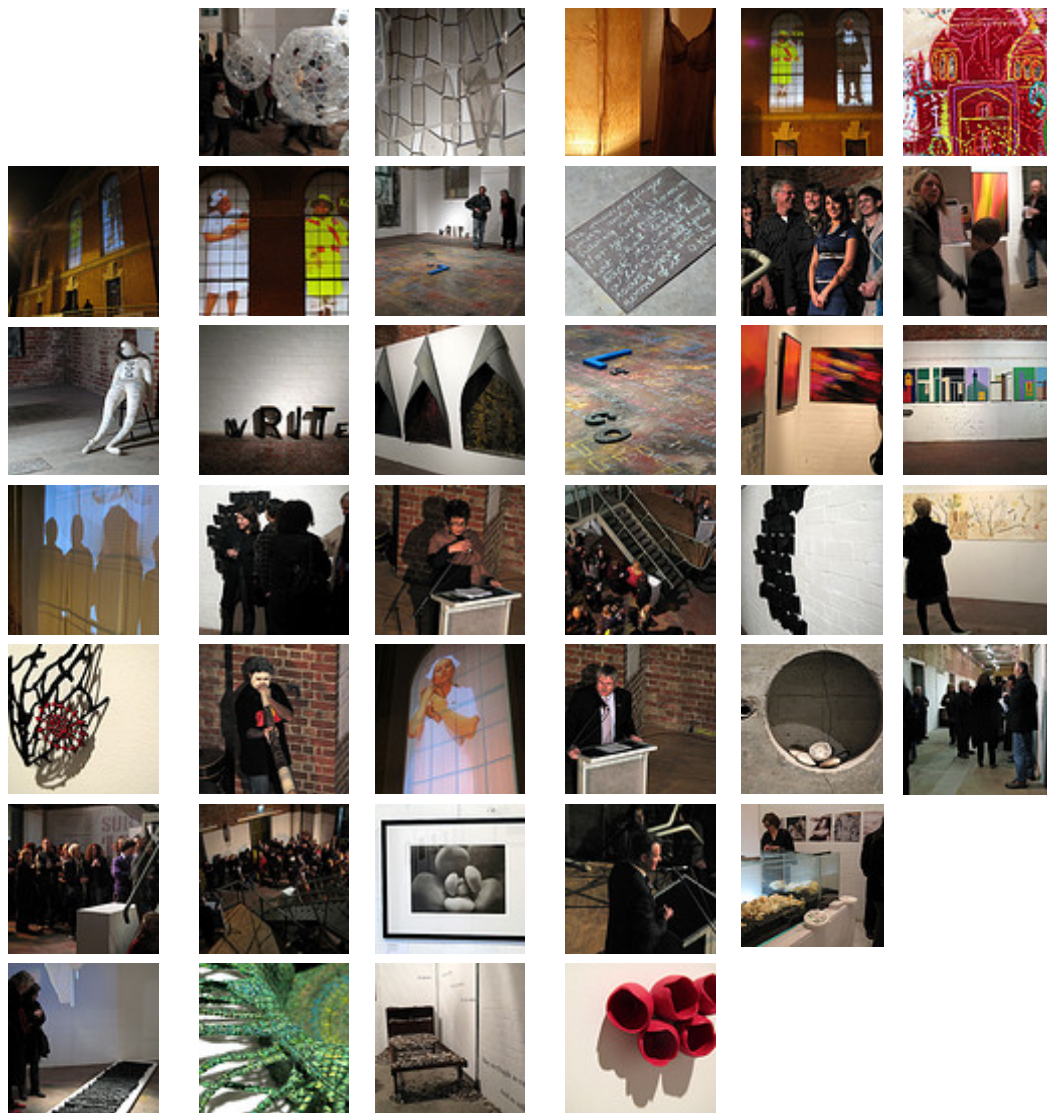


Exhibition Proposal Information Kit

SUB 12

Exhibition dates:

July 9th – September 26th 2010



Deadline for Submissions:
Friday, 27th November 2009

Presented by:
Hobsons Bay City Council and The Substation

Sub12 is a 12 week exhibition series that promotes excellence in contemporary visual art, comprising four distinct exhibition blocks, from July through September, each with its own opening night and diverse mix of emerging and established artists.

Please complete the following form and submit all the required support material as outlined below. For further information please contact Tania Blackwell on 9932 1000 or tblackwell@hobsonsabay.vic.gov.au

Deadline for submissions is 5.00pm, Friday, 27th November 2010

Name:.....

Contact person name:

Phone:..... Mobile:.....

Email:
.....

Address:.....

Suburb:Post code

Proposed Exhibition Title:

.....

Exhibition Proposal Summary (50 words or less)

.....
.....
.....
.....
.....
.....

Nominate exhibition dates

Please order in preference

i.e. 1 most desired, 2 second most desired etc.



Friday, July 9th – Sunday, July 25th	
Friday, July 30th – Sunday, August 15th	
Friday, August 18th – Sunday, September 5th	
Friday, September 10th – Sunday, September 26th	

Nominate gallery space/s (or all)**Exhibition period including installation and dismantling is three weeks**

Rotary Bay No. 1 8000mm x 9000mm includes upstairs mezzanine level and downstairs	\$2000 + GST (approx \$660+GST per week)	
Rotary Bay No. 2 8000mm x 9000mm includes upstairs mezzanine level and downstairs	\$2000 + GST (approx \$660+GST per week)	
Gallery 1 3650mm x 4400mm	\$1100 + GST (approx \$360+GST per week)	
Gallery 2 3850mm x 4400mm	\$1100+ GST (approx \$360+GST per week)	
Gallery 3 6000mm x 4000mm	\$1500 + GST (approx \$500+ GST per week)	
Multimedia Room 4400mm x 1500mm	\$550 + GST (approx \$180 +GST per week)	
Gallery 4 3850mm x 4400mm	\$1100 + GST (approx \$360+GST per week)	
Hallway 25000mm x 3400mm	\$2000 + GST (approx \$660+GST per week)	

Special Installation Requirements:

Please outline any special installation requirements for your exhibition

(Note: there are various sized plinths and cabinets available)

Comments:

Support Material Required:

1. **Curriculum vitae** of no more than one page for each artist.
2. **Support images:** Eight – 12 low resolution digital images formatted as Jpegs or TIFFS on a CD of current and or relevant work (applications can be emailed). The images should reflect the work of each artist if a team is put forward. Please supply an image list that details, title, media and date of the work shown. Please supply a hard copy of all material as well.
3. **Written outline** of the theme of the exhibition including an exhibition title and media.
(Please do not exceed 1 x A4 page)

Exhibition space viewing times

Saturday, 14th November 2.00pm – 4.00pm
Sunday, 22nd November 2.00pm – 4.00pm

Guidelines

1. Artists will be notified in writing if successful or unsuccessful in securing an exhibition as part of the Sub 12 program. If successful further details and directions will be provided.
2. The cost of fliers, catalogue book, advertising, opening night events are covered under the Sub 12 program.
3. Artists/artist groups are required to pay a 20% bond at the time of securing exhibition space (January 2010). This bond is returned at the conclusion of the exhibition and on the proviso that the exhibition space has been left in a clean and tidy manner. This bond is not refundable should the artist withdraw from the program.
4. All gallery hire fees are to be paid in full in March 2010 prior to the exhibition commencement. The gallery hire fees are stipulated on the floor plan, and the fees are for the entire three week exhibition block, this includes installation and dismantling dates.
5. Successful artists/artist groups will be required to submit an image and statement for the catalogue during March 2010.
6. Exhibition launches will occur on the first Friday night of each exhibition period.
7. Opening Hours , Wednesday - Thursday 10.00am – 4.00pm, Friday 12.00pm – 7.00pm , Saturday and Sunday 10.00am – 4.00pm. (Subject to change)
8. Artists/artist groups are responsible for gallery fee, bond and insurance of artwork. No commission is taken for artwork sales; artists need to manage and document their own sales for acquittal and program evaluation purposes.
9. The exhibition program is annual, and runs between July and September for the 12 week period.
10. All successful artists/artist groups will be required to sign a copyright agreement that gives permission for images to be used for publicity and promotional purposes.
11. Artists maybe required to gallery sit one shift during their exhibition period (subject to change)

Timeline and Dates

January 2010	Artists notified of outcome, bond to be paid
March 2010	Gallery hire fees due
April 2010	Publicity collation commences; all artists to submit exhibition statements and high res images and brief bios for catalogue.
April / May 2010	Graphic design and printing of Catalogue Program advertised in art almanac and other media. Media packs sent out
Exhibition Series one	Bump in – July 7 th onwards Exhibition Dates: 9th July – 25th July 2010 Bump out – 26th July
Exhibition Series two	Bump in – 28th July onwards Exhibition Dates: 30th July – 15th August 2010 Bump out – 16th August
Exhibition Series three	Bump in - 18th August onwards Exhibition Dates: 20th August – 5th September 2010 Bump out – 6th September
Exhibition Series four	Bump in – 8th September onwards Exhibition Dates: 10th September – 26th September 2010 Bump out – 27th September
October 2010	Evaluation / artist acquittals / bond payments returned.

Please complete and post this form with support material requested to:

Tania Blackwell
Hobsons Bay City Council
PO Box 21
Altona 3018
Ph: 9932 1000
tblackwell@hobsonsbay.vic.gov.au

