



The Substation Newsletter

November 2007



In this Issue

- Upcoming Events
 - Working Bee
 - VCE Arts Exhibition
 - Members Get Together
 - Photographic Exhibition
 - ArtCraft 2008
- Organisational Issues
- Recent Events

Upcoming Events

Working Bee

Volunteers are needed for a working bee to be held on Sunday 18 November, between 9am and 12noon, to prepare the Substation for the VCE Arts Exhibition.

This involves:

- Setting up the display boards
- Some minor paint touch-ups
- Sweeping floors
- Cleaning and tidying the lunch room and toilets
- Tidying the grounds
- If time allows, attempting to get some order into the workshop!

So don your work clothes, bring along a pair of gloves and enjoy the chance to make small contribution and catch up with other members.

We will kick off at 9am and finish around 12pm, but please feel free to drop in for a short time if you can't commit to the whole morning.

VCE Arts Exhibition

Works presented by VCE Arts Students of participating Western Region Schools.

Opening night is Thursday 22 November, 7-9pm - for artists, their teachers, friends and families and invited guests only.

The exhibition is open to the public Friday 23 November 4-7pm, Saturday 24 November and Sunday 25 November 11am-5pm.

Members Get Together

Friday 23 November 7-9pm at the Substation.

This is a great opportunity to view the VCE exhibition and meet other Substation volunteers and members.

Drinks and nibbles provided.

Will'n Women and the Multi Cultural Choir will both be performing on the night.

Photographic Exhibition

The photographic exhibition will open on Friday 30 November 7-10pm and run to Sunday 16 December. Exhibition hours are Friday-Sunday 11am-8pm. All are welcome to the opening celebrations.

ArtCraft 2008

Saturday 15 - Sunday 16 March 2008

If you explore your creative side by quilting, woodwork, ceramics, pottery, painting, lead lighting, photography, jewellery making, to name but a few, then this exhibition is for you. This is an event for the hobby enthusiast – strictly no professionals please!

In 2007, ArtCraft attracted over 70 entries.

You can view photos of these entries on our web site at www.thesubstation.org.au

This is an opportunity for you to put your talents on display to the community at the Substation in a non-competitive environment. The only judging will be a *People's Choice Award*.

Each participant will be limited to two items and at the conclusion of the exhibition will receive a Certificate of Participation. All items will be professionally labelled and displayed in a unique gallery environment.

Entry costs, closing date and application form

\$10 per item for non Substation Members and \$5 per item for Substation Members.

You can pay by cheque or money order when you submit your entry form, or send in your form and pay on the day.

Entry closing date is Friday 7 March 2008.

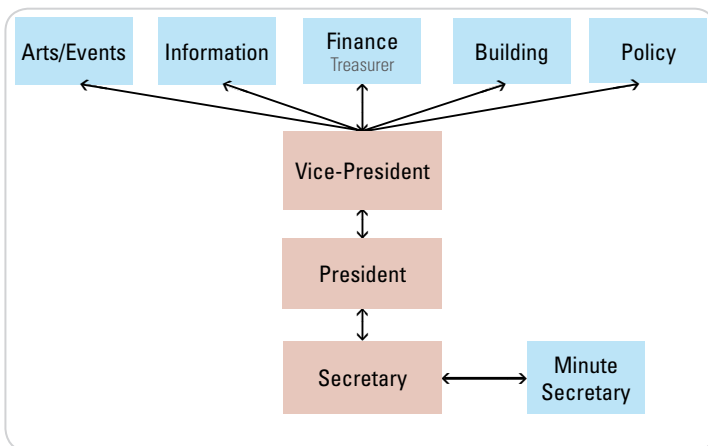
The entry form is enclosed. For additional entry forms see www.thesubstation.org.au

For all enquiries about ArtCraft, contact Margaret Trousdale
E: magsmt@hotmail.com or M: 0414 502 657

Organisational Issues

New Committee Structure

A new committee structure was decided upon at the Annual General Meeting held on 13 August.



Arts/Events - Karin George

Information - Fiona Ellis

Finance (Treasurer) - Nancy Belyea

Building - Lothar Ploss

Policy - Simon Burrett

Vice-President - Helen Nicholson

President - Darren Williams

Secretary - Margaret Trousdale

Minute Secretary - vacant

The expanded subcommittee structure aims to involve more of our members in the project and share the workload more evenly. The more helpers - the easier each job is. If you haven't been active before or are wishing to get more involved here is your chance. See the Substation web site for contact details of the committee members.

The Treasurer this year, Nancy Belyea, also chairs a Finance Committee in charge of grants administration and fundraising. Finance Committee members are Darren Williams, Leonie Kervin and Anneliese Rosenmayer. Leonie is an artist, musician, organiser and a mother of teenage children. Anneliese is interested in obtaining funds for community endeavours.

Volunteer Minutes Secretary needed

Would you like to get involved in a fantastic Arts Community Project? Do you have the time and skills to take minutes at the Executive Committee Meeting once a month, and distribute them to each member after the meeting? If you would like to get involved, contact Margaret Trousdale E: magsmt@hotmail.com or M: 0414 502 657 for further information.

Fundraising Update

The Committee has recently applied for funding from the Federal Government and the Hobsons Bay City Council to provide funds for our construction program for the year ahead. A decision on both applications will be made in November. So watch this space!

Further Information

The Substation: 1 Market Street Newport VIC 3015

Postal Address: PO Box 57 Williamstown VIC 3016

E: substation@vic.chariot.net.au

www.thesubstation.org.au

Substation Building Progress

We are getting closer to starting major construction works. We have selected a local builder, Sandy Richardson, to act as building works co-ordinator. His tasks will be to:

- Manage the construction process
- Undertake building works that are within the capability of his own trades team
- Arrange quotes and sub-contract other trades work

Before we can begin the major works we need to obtain a building permit. This involves:

- Updating drawings to show the changes to the internal design
- Obtaining certification of all structural design
- Revising the fire engineering report, taking into account the proposed changes.

While we arrange the building permit, Sandy will still be able to begin work on many of the minor demolition, construction and refurbishment tasks in the Substation, so we expect to see significant progress within the coming months.

Recent Events

Substation Open Day

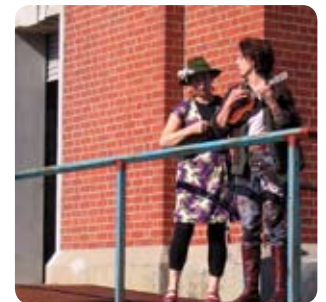
Open Day at the Substation was held on Sunday 22 July, in conjunction with Paul Randall Exhibition. There were guided tours of the building, and entertainment by the Newport Bush Orchestra. A great day was had by all.



The Mayor of Hobsons Bay - Councillor Leigh Hardinge, says a few words at the Open Day



Members of the Newport Bush Orchestra Newport Bush Orchestra and the Newport Folk and Fiddle Club



Dates to Remember

2007

- **Working Bee:** Sunday 18 November, 9am-12noon
- **VCE Arts Exhibition:** opening night is Thursday 22 November, 7-9pm; the exhibition is open to the public Friday 23 November 4-7pm, Saturday 24 November and Sunday 25 November 11am-5pm
- **Members Get Together:** Friday 23 November 7-9pm
- **Photographic Exhibition:** opens Friday 30 November 7-10pm and will run until Sunday 16 December

2008

- **ArtCraft 2008:** Saturday 15 - Sunday 16 March